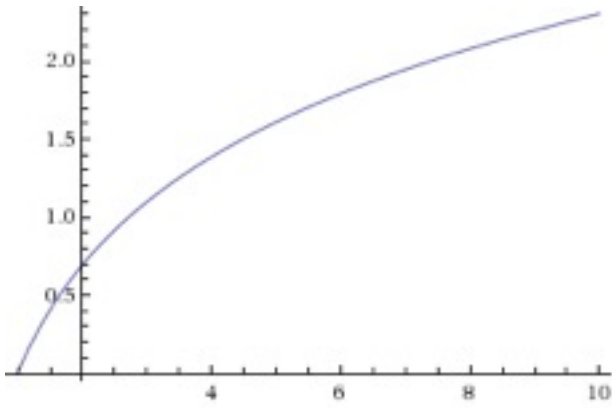
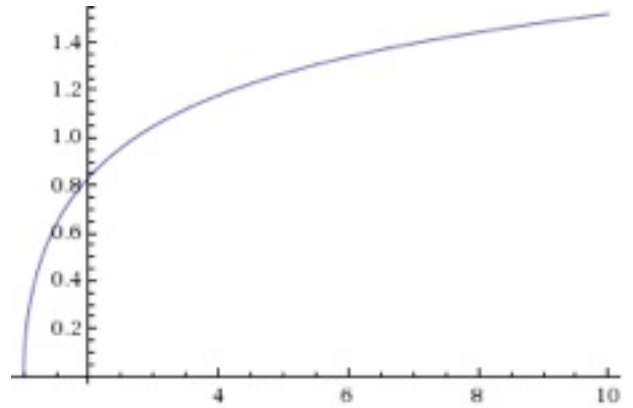


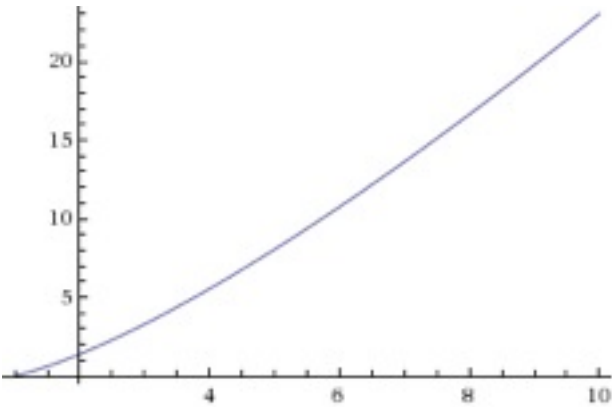
$\log n$



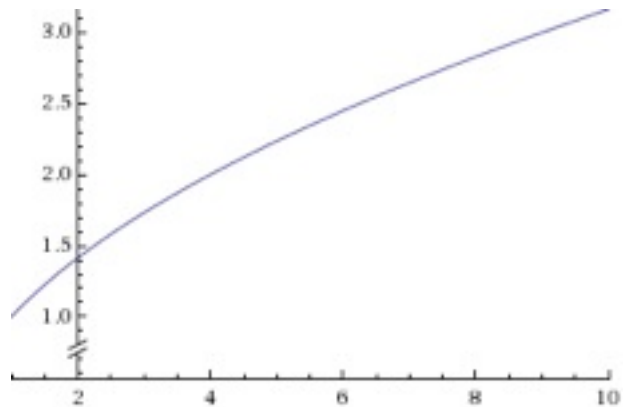
$\text{sqrt}(\log n)$



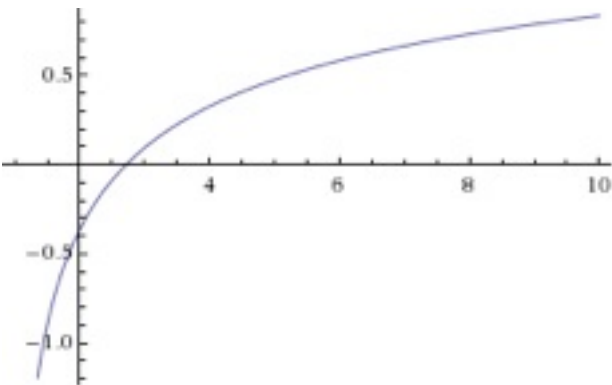
$n \log n$



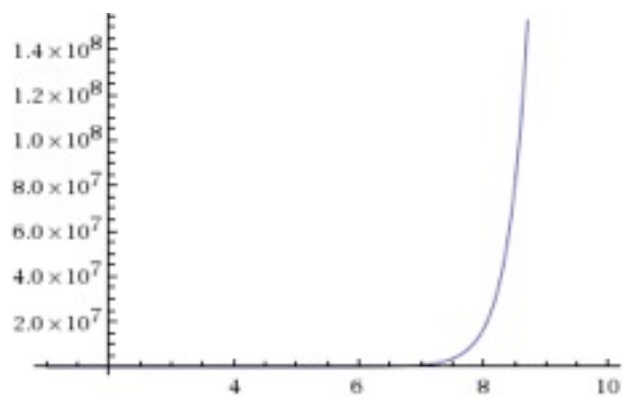
$\text{sqrt}(n)$



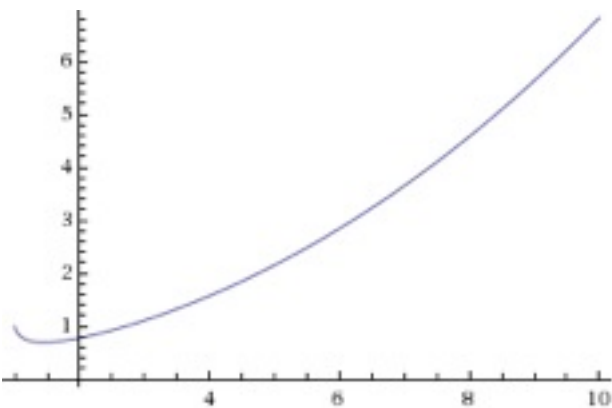
$\ln \ln n$



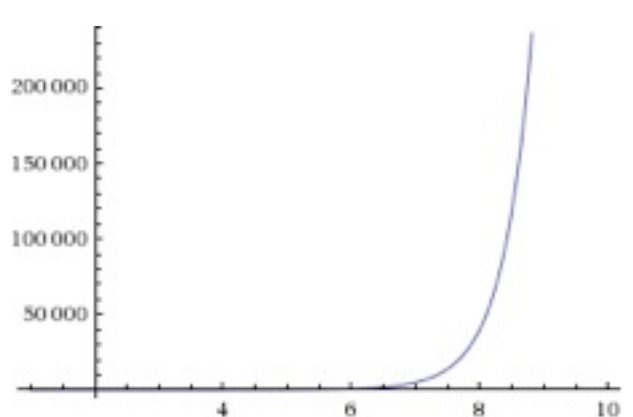
$n^n$



$(\ln n)^{\ln n}$



$n!$



Der Logarithmus wächst langsamer als jeder Potenz, jede Potenz langsamer als jede Exponentialfunktion!